

Technical Data Sheet

CODE 16140

CA 100 MD E RF

Centrifugal duct fans for roof mounting



Certifications



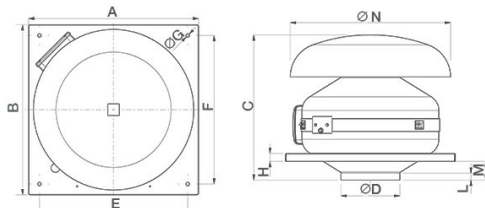
IMQ Performance



TECHNICAL AND PERFORMANCE DATA

Absorbed power 1st speed (W)	38	Delivery 1st speed (l/s)	50
Frequency (Hz)	50/60	Delivery 1st speed (m ³ /h)	180
Insulation Class	II°	Max delivery at max speed (l/s)	78
IP	45	Max delivery at max speed (m ³ /h)	280
Max absorbed Power at 60Hz (W)	100	Pressure - 1st speed (mmH2O)	32
Max ambient temperature for continuous operation (°C)	50	Pressure - 1st speed (Pa)	314
Max. absorbed Current at max. speed (A)	0,40	Pressure max - max speed (mmH2O)	41
Max. absorbed Current at min. speed (A)	0,28	Pressure max - max speed (Pa)	402
Max. absorbed power at max speed (W)	85	RPM max	2430
Nominal Diameter (mm)	100	RPM min	1590
Voltage (V)	220-240	Sound pressure level Lp [dB (A)] 3m - max speed	37,5
Weight (Kg)	3,5	Sound pressure level Lp [dB (A)] 3m - min speed	27,3

DIMENSIONS



Etichetta Energetica	N0
Size A (mm)	334
Size B (mm)	334
Size C (mm)	305
Size D (mm)	∅ 97
Size E (mm)	280
Size F (mm)	280
Size G (mm)	∅ 9
Size H (mm)	20
Size L (mm)	15
Size M (mm)	35
Size N (mm)	∅ 300

PER INFORMAZIONI:

Servizio al Cliente: tel +39 02 90699395 premendo 1 dopo messaggio registrato (consulenza su prodotti e impianti)

Pre & Post Vendita: fax +39 02 90699302

Email prevendita: prevendita@vortice-italy.com

Technical Data Sheet

CODE 16140

CA 100 MD E RF

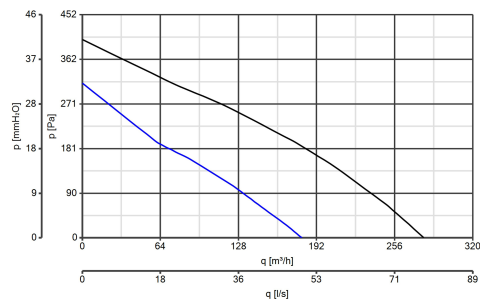
Centrifugal duct fans for roof mounting



DESCRIPTION

- Pickled and phosphated steel housing/roof mounting plate with polyester powder-coated finish, resistant to the aggressive action of atmospheric agents
- Nominal diameter 100 mm
- 2 speed AC motor with thermal overload cutout and shaft turning in ball bearings, coupled to backward curved impeller
- Minimum air flow 180 m3/h
- Maximum air flow 280 m3/h
- Operation controllable by remote sensors monitoring: Temperature, Relative Humidity, Smoke and Presence
- Zinc-coated steel brackets for wall mounting
- IMQ SAFETY and IMQ PERFORMANCE certifications
- Vortice speed controller

CURVES



ACCESSORIES



C 1.5
(COMANDO EL.
1.5 A)
Code 12966



C TEMP
Code 12992



C SMOKE
Code 12993



C HCS
Code 12994

PER INFORMAZIONI:

Servizio al Cliente: tel +39 02 90699395 premendo 1 dopo messaggio registrato (consulenza su prodotti e impianti)
Pre & Post Vendita: fax +39 02 90699302
Email prevendita: prevendita@vortice-italy.com